

1410135-2 ✓ ACTIVE

MULTIGIG RT | MULTIGIG RT 2

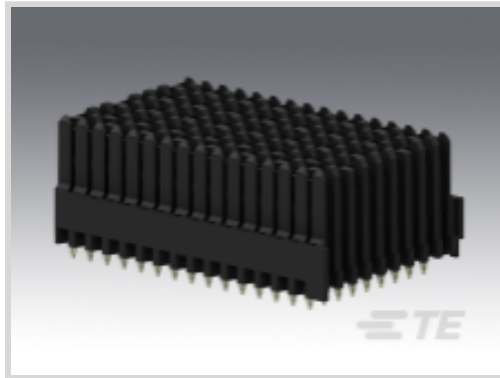
TE Internal #: 1410135-2

High Speed Backplane Connectors, Board-to-Board, 135 Position, Mating Alignment, Polarization Mating Alignment Type, 9 Row, 15 Column, MULTIGIG RT 2

[View on TE.com >](#)



Connectors > PCB Connectors > Backplane Connectors > High Speed Connectors



Connector System: **Board-to-Board**

Number of Positions: **135**

Row-to-Row Spacing: **1.8 mm [.071 in]**

Mating Alignment: **With**

Mating Alignment Type: **Polarization**

Features

Product Type Features

| | |
|---------------------------------------|-----------------------|
| Applied to Printed Circuit Board Type | Backplane |
| Connector System | Board-to-Board |
| PCB Connector Assembly Type | PCB Mount Receptacle |
| Shroud Style | Unshrouded |
| Connector & Contact Terminates To | Printed Circuit Board |

Configuration Features

| | |
|------------------------|-----------------------|
| Card Slot Centerline | 20.3 mm [.8 in] |
| Number of Positions | 135 |
| Number of Rows | 9 |
| Number of Columns | 15 |
| Backplane Architecture | Traditional Backplane |
| PCB Mount Orientation | Vertical |
| Guide Location | Center |

Contact Features

| | |
|------------------------------|-----|
| Contact Current Rating (Max) | 1 A |
|------------------------------|-----|

Mechanical Attachment

| | |
|------------------|------|
| Mating Alignment | With |
|------------------|------|



| | |
|-----------------------|--------------|
| Mating Alignment Type | Polarization |
|-----------------------|--------------|

| | |
|-------------------------|-------------|
| Connector Mounting Type | Board Mount |
|-------------------------|-------------|

Housing Features

| | |
|--------------------------|---|
| Number of Shrouded Sides | 0 |
|--------------------------|---|

| | |
|--------------------|-----------------|
| Centerline (Pitch) | 1.8 mm[.071 in] |
|--------------------|-----------------|

Dimensions

| | |
|--------------------|-----------------|
| Row-to-Row Spacing | 1.8 mm[.071 in] |
|--------------------|-----------------|

Usage Conditions

| | |
|-----------------------------|----------------------------|
| Operating Temperature Range | -55 – 105 °C[-67 – 221 °F] |
|-----------------------------|----------------------------|

Operation/Application

| | |
|---------------------|----------------|
| Circuit Application | Power & Signal |
|---------------------|----------------|

Product Compliance

For compliance documentation, visit the product page on [TE.com](https://www.te.com)>

| | |
|------------------------------|-----------|
| EU RoHS Directive 2011/65/EU | Compliant |
|------------------------------|-----------|

| | |
|-----------------------------|-----------|
| EU ELV Directive 2000/53/EC | Compliant |
|-----------------------------|-----------|

| | |
|---|---|
| China RoHS 2 Directive MIIT Order No 32, 2016 | No Restricted Materials Above Threshold |
|---|---|

| | |
|--|---|
| EU REACH Regulation (EC) No. 1907/2006 | Current ECHA Candidate List: JUNE 2022 (224) Candidate List Declared Against: JUNE 2022 (224) Does not contain REACH SVHC |
|--|---|

| | |
|-----------------|---|
| Halogen Content | Low Halogen - Br, Cl, F, I < 900 ppm per homogenous material. Also BFR/CFR/PVC Free |
|-----------------|---|

| | |
|---------------------------|--|
| Solder Process Capability | Not applicable for solder process capability |
|---------------------------|--|

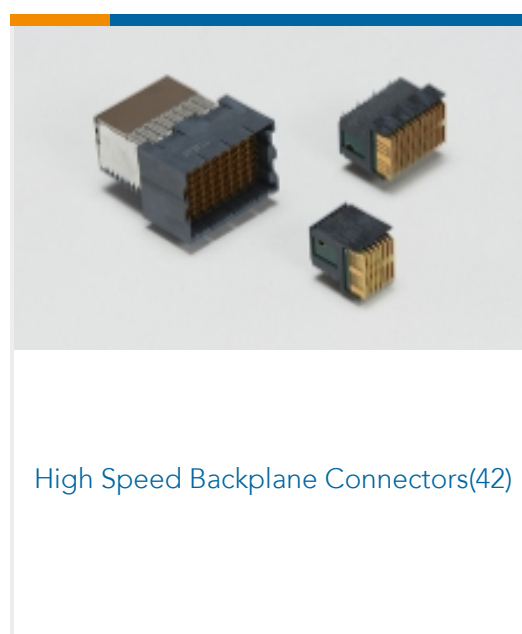
Product Compliance Disclaimer

This information is provided based on reasonable inquiry of our suppliers and represents our current actual knowledge based on the information they provided. This information is subject to change. The part numbers that TE has identified as EU RoHS compliant have a maximum concentration of 0.1% by weight in homogenous materials for lead, hexavalent chromium, mercury, PBB, PBDE, DBP, BBP, DEHP, DIBP, and 0.01% for cadmium, or qualify for an exemption to these limits as defined in the Annexes of Directive 2011/65/EU (RoHS2). Finished electrical and electronic equipment products will be CE marked as required by Directive 2011/65/EU. Components may not be CE marked. Additionally, the part numbers that TE has identified as EU ELV compliant have a maximum concentration of 0.1% by weight in homogenous materials for lead, hexavalent chromium, and mercury, and 0.01% for cadmium, or qualify for an exemption to these limits as defined in the Annexes of Directive 2000/53/EC (ELV). Regarding the REACH Regulation, the information TE provides on SVHC in articles for this part number is based on the latest European Chemicals Agency (ECHA) 'Guidance on requirements for substances in articles' posted at this URL: <https://echa.europa.eu/guidance-documents/guidance-on-reach>

Compatible Parts



Also in the Series | MULTIGIG RT 2



Documents

Product Drawings

MULTIGIG RT T2 .8" BP FULL CNT

English

CAD Files

Customer View Model

[ENG_CVM_1410135-2_A.3d_igs.zip](#)

English

Customer View Model

[ENG_CVM_1410135-2_A.3d_stp.zip](#)

English

Customer View Model

[ENG_CVM_1410135-2_A.2d_dxf.zip](#)

English

3D PDF

English

By downloading the CAD file I accept and agree to the [Terms and Conditions](#) of use.

Datasheets & Catalog Pages

[Board-Level Interconnects for Rugged Embedded Computing Brochure](#)

English